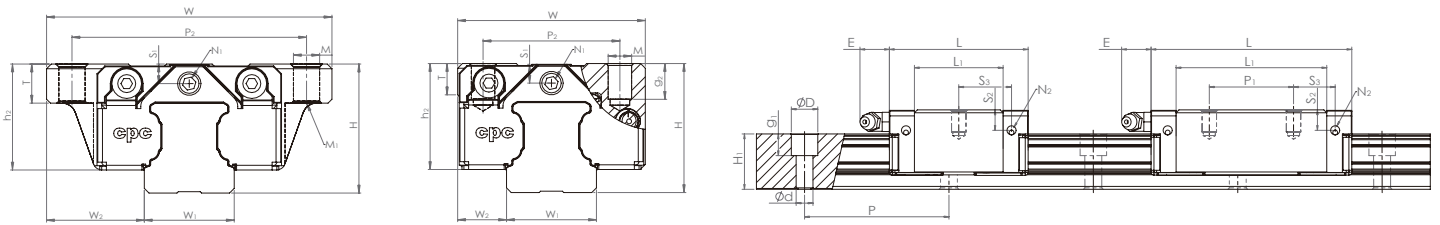


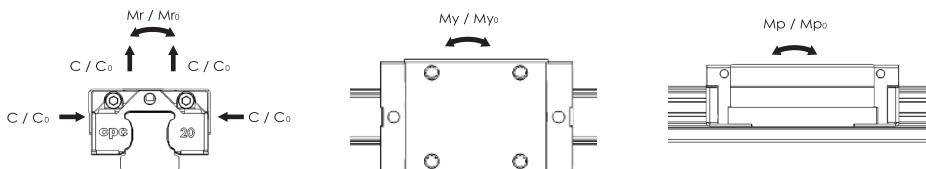
ARC/HRC Ball Type Linear Guide Series

Dimensions and specification



Model Code	Fabrication Dimension		Rail Dimension (mm)					Block Dimension (mm)								
	H	W2	W1	H1	P	Dxdg1	W	L	L1	h2	P1	P2	Mxg2	M1	T	N1
ARC 30 MN	42	16	28	27	80	14x9x12	60	97.5	71.5	35.4	40	40	M8x10	-	12	M6
ARC30 FN	42	31	28	27	80	14x9x12	90	97.5	71.5	35.4	40	72	M10x12	M8	12	M6
HRC 30 MN	45	16	28	27	80	14x9x12	60	97.5	71.5	38.4	40	40	M8x12	-	12	M6
HRC 30 FN	42	31	28	27	80	14x9x12	90	97.5	71.5	35.4	52	72	M10x12	M8	12	M6

Block Dimension (mm)							Load Capacities (KN)		Static Moment (KN)			Weight		Model Code
N2	N3	E	S1	S2	S3	S4	C _{100B}	C ₀	M _{r0}	M _{p0}	M _{y0}	Block(g)	Rail(g/m)	
M6	∅ 8.2x1.4	12	7.5	12	20.8	20.5	32720	58906	770	520	520	800	4380	ARC 30 MN
M6	∅ 8.2x1.4	12	7.5	12	20.8	20.5	32720	58906	770	520	520	1150	4380	ARC30 FN
M6	∅ 8.2x1.4	12	10.5	15	20.8	20.5	32720	58906	770	520	520	890	4380	HRC 30 MN
M6	∅ 8.2x1.4	12	7.5	12	14.8	14.5	32720	58906	770	520	520	1110	4380	HRC 30 FN



The above rating load capacities and static moment are calculated according to ISO14728 standard. The rating life for basic dynamic load rating is defined as the total 100km travel distance that 90% of a group of identical linear guides can be operated individually under the same conditions free from any material damage caused by rolling fatigue. When the standard of 50km travel distance is applied, the above basic dynamic load rating C of ISO14728 should be multiply by 1.26 for conversion.