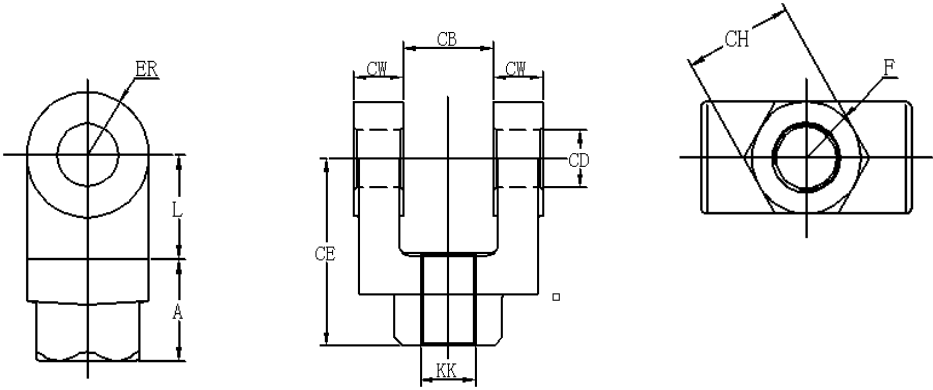


# PIB

## Rod Clevis

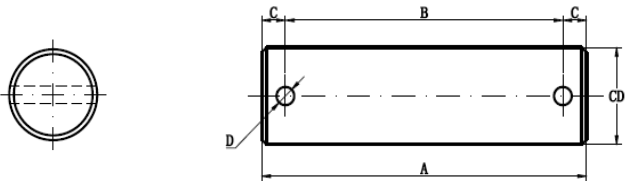
\*Material:05 thru 17 1045 steel Forging;20 & up 1045 steel Casting  
 Surface Treatment:black oxide finish



Hydraulic Cylinder Component Parts-Rod Clevis										
Part number	CB	CD	CE	CH	CW	F	L	A	KK	ER
PIB-C-05	0.765	1/2	1-1/2	1	1/2	1	3/4	3/4	7/16-20	1/2
PIB-C-07	1.265	3/4	2-3/8	1-1/4	5/8	1-1/4	1-1/4	1-1/8	3/4-16	3/4
PIB-C-07M	1.265	3/4	2-1/8	1-3/8	5/8	1-1/4	1	1-1/8	3/4-16	3/4
PIB-C-10	1.515	1	3-1/8	1-1/2	3/4	1-1/2	1-1/2	1-5/8	1-14	1
PIB-C-10M	1.515	1	2-15/16	1-1/2	3/4	1-5/8	1-5/16	1-5/8	1-14	1
PIB-C-13	2.032	1-3/8	4-1/8	2	1	2	2-1/8	2	1-1/4-12	1-3/8
PIB-C-13M	2.032	1-3/8	3-3/4	2	1	2	1-3/4	2	1-1/4-12	1-3/8
PIB-C-17	2.531	1-3/4	4-1/2	2-3/8	1-1/4	2-3/8	2-1/4	2-1/4	1-1/2-12	1-3/4
PIB-C-20	2.531	2	5-1/2	2-15/16	1-1/4	2-15/16	2-1/2	3	1-7/8-12	2
PIB-C-25	3.032	2-1/2	6-1/2	3-1/2	1-1/2	3-1/2	3	3-1/2	2-1/4-12	2-1/2
PIB-C-30	3.032	3	6-3/4	3-7/8	1-1/2	3-7/8	3-1/4	3-1/2	2-1/2-12	2-3/4
PIB-C-30M	3.032	3	6-3/4	3-7/8	1-1/2	3-7/8	3-1/4	3-1/2	2-1/2-12	3

## Pivot pins

Material:1045 steel  
 Heat Treatment:Nitrotec



Part number	CD	A	B	C	D
PIB-P-05H	0.500	2.281	1.938	0.172	0.106
PIB-P-07H	0.750	3.094	2.719	0.188	0.140
PIB-P-10H	1.000	3.594	3.219	0.188	0.140
PIB-P-13H	1.375	4.656	4.250	0.203	0.173
PIB-P-17H	1.750	5.656	5.250	0.203	0.173
PIB-P-20H	2.000	5.719	5.281	0.219	0.204
PIB-P-25H	2.500	6.781	6.313	0.234	0.219
PIB-P-30H	3.000	6.844	6.344	0.250	0.250
PIB-P-35H	3.500	8.969	8.406	0.282	0.312
PIB-P-40H	4.000	9.969	9.406	0.282	0.312