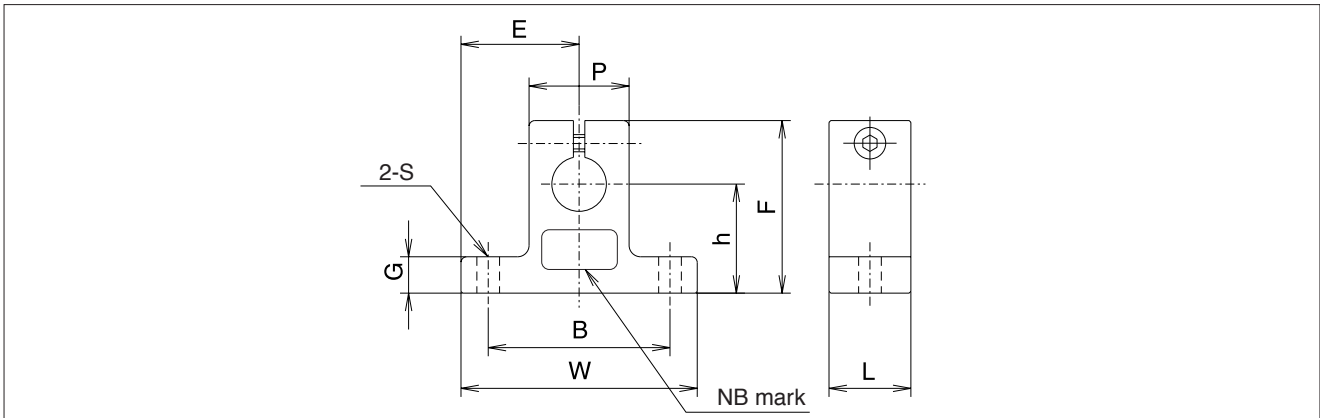
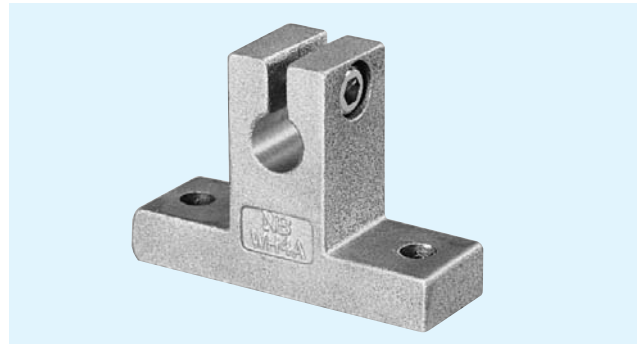


WH-A TYPE

– Shaft End Supporter –
(Inch Series)



part number	shaft diameter inch/mm	major dimensions inch/mm										mass g
		h	E	W	L	F	G	P	B	S	BOLT	
		±.001 ±0.02	±.005 ±0.1						±.01 ±0.2			
WH 4A	.2500 6.350	.6875 17.463	.7500 19.050	1.500 38.10	.500 12.70	1.063 27.00	.250 6.35	.500 12.70	1.125 28.58	.156 4.0	# 6	15
WH 6A	.3750 9.525	.7500 19.050	.8125 20.637	1.625 41.28	.563 14.30	1.187 30.16	.250 6.35	.688 17.46	1.250 31.75	.156 4.0	# 6	21
WH 8A	.5000 12.700	1.0000 25.400	1.0000 25.400	2.000 50.80	.625 15.88	1.625 41.28	.250 6.35	.875 22.23	1.500 38.10	.188 4.8	# 8	35
WH 10A	.6250 15.875	1.0000 25.400	1.2500 31.750	2.500 63.50	.688 17.46	1.750 44.45	.313 7.94	1.000 25.40	1.875 47.63	.218 5.6	#10	52
WH 12A	.7500 19.050	1.2500 31.750	1.2500 31.750	2.500 63.50	.750 19.05	2.063 52.40	.313 7.94	1.250 31.75	2.000 50.80	.218 5.6	#10	74
WH 16A	1.0000 25.400	1.5000 38.100	1.5315 38.900	3.063 77.80	1.000 25.40	2.500 63.50	.375 9.53	1.500 38.10	2.500 63.50	.281 7.2	1/4	136
WH 20A	1.2500 31.750	1.7500 44.450	1.8750 47.625	3.750 95.25	1.125 28.58	3.000 76.20	.438 11.14	2.000 50.80	3.000 76.20	.346 8.8	5/16	254
WH 24A	1.5000 38.100	2.0000 50.800	2.1875 55.550	4.375 111.13	1.250 31.75	3.437 87.30	.500 12.70	2.250 57.15	3.500 88.90	.346 8.8	5/16	340
WH 32A	2.0000 50.800	2.5000 63.500	2.7500 69.850	5.500 139.70	1.500 38.10	4.375 111.13	.625 15.88	3.000 76.20	4.500 114.30	.406 10.5	3/8	670

1 kg ≈ 2.205lbs

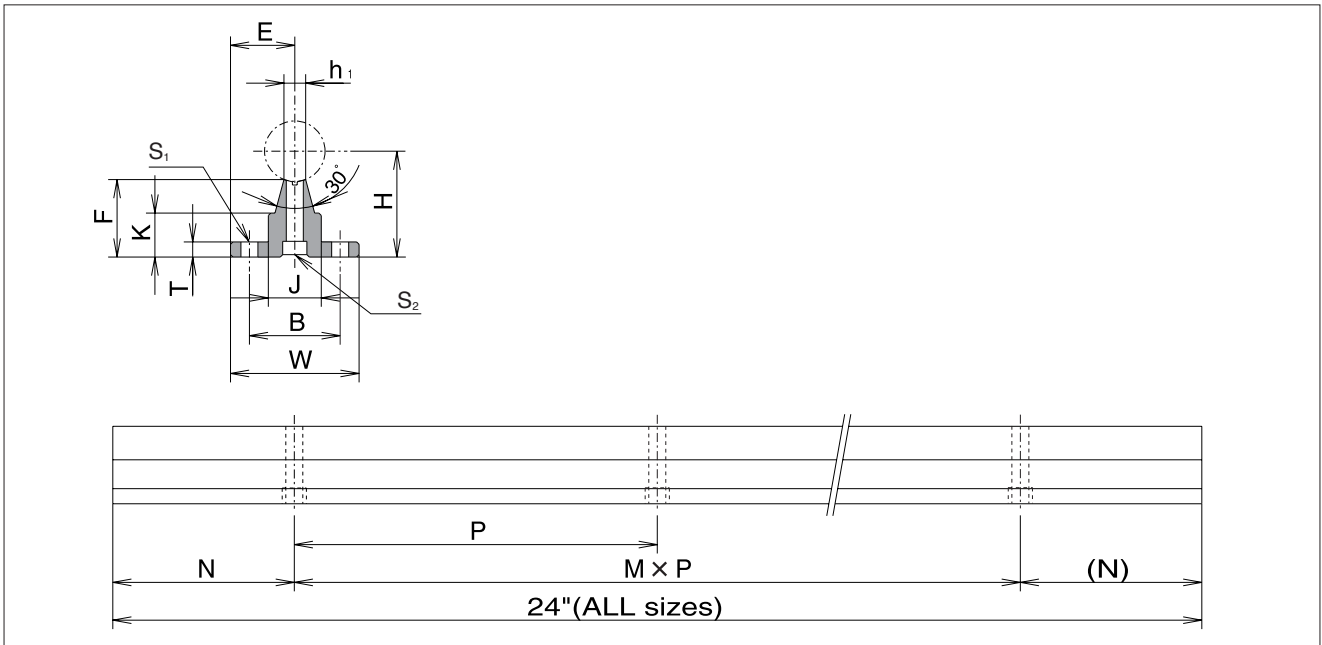
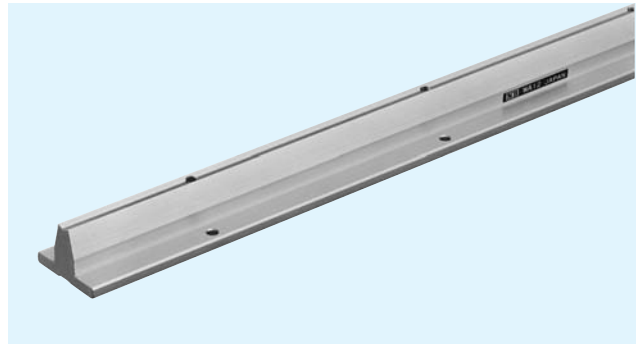


PACIFIC INTERNATIONAL BEARING SALES, INC.
800.228.8895 • WWW.PACIFICBEARINGSALES.COM

WA TYPE

— Shaft Support Rail —

(Inch Series)



part number	shaft diameter	major dimensions								mounting dimensions						mass	
		H	E	W	F	T	K	J	h ₁	B	N	M × P	S ₁		S ₂		
		±.001 ±0.02	±.005 ±0.1							±.01 ±0.2			hole	bolt#	hole		bolt#
inch/mm	inch/mm	inch/mm	inch/mm	inch/mm	inch/mm	inch/mm	inch/mm	inch/mm	inch/mm	inch/mm	inch/mm	inch/mm	inch/mm	inch/mm	inch/mm	inch/mm	g
WA 8-24PD	.5000	1.125	.7500	1.500	.903	.188	.466	.500	.255	1.000	2	5 × 4	.169	# 6	.169	# 6	600
	12.700	28.575	19.050	38.10	22.94	4.78	11.84	12.70	6.48	25.40	50.8	5 × 101.6	4.3	# 6	4.3	# 6	
WA10-24PD	.6250	1.125	.8125	1.625	.841	.250	.423	.500	.276	1.125	2	5 × 4	.193	# 8	.193	# 8	680
	15.875	28.575	20.638	41.28	21.36	6.35	10.74	12.70	7.01	28.58	50.8	5 × 101.6	4.9	# 8	4.9	# 8	
WA12-24PD	.7500	1.500	.8750	1.750	1.158	.250	.592	.625	.322	1.250	3	3 × 6	.221	#10	.221	#10	910
	19.050	38.100	22.225	44.45	29.41	6.35	15.04	15.88	8.18	31.75	76.2	3 × 152.4	5.6	#10	5.6	#10	
WA16-24PD	1.0000	1.750	1.0625	2.125	1.280	.250	.727	.875	.359	1.500	3	3 × 6	.281	1/4	.281	1/4	1290
	25.400	44.450	26.988	53.98	32.51	6.35	18.47	22.23	9.12	38.10	76.2	3 × 152.4	7.1	1/4	7.1	1/4	
WA20-24PD	1.2500	2.125	1.2500	2.500	1.537	.313	.799	1.100	.437	1.875	3	3 × 6	.343	5/16	.343	5/16	1810
	31.750	53.975	31.750	63.50	39.04	7.95	20.29	27.94	11.10	47.63	76.2	3 × 152.4	8.7	5/16	8.7	5/16	
WA24-24PD	1.5000	2.500	1.5000	3.000	1.798	.375	.922	1.375	.558	2.250	4	2 × 8	.343	5/16	.406	3/8	2610
	38.100	63.500	38.100	76.20	45.67	9.53	23.42	34.93	14.17	57.15	101.6	2 × 203.2	8.7	5/16	10.3	3/8	
WA32-24PD	2.0000	3.250	1.8750	3.750	2.322	.500	1.450	1.500	.800	2.750	4	2 × 8	.406	3/8	.531	1/2	4380
	50.800	82.550	47.625	95.25	58.98	12.70	36.83	38.10	20.32	69.85	101.6	2 × 203.2	10.3	3/8	13.5	1/2	

All sizes are also available without pre-drilled mounting holes. Specify Part Number as WA ##-## when ordering. Complete shaft-rail assemblies are also available as well as custom drilling and lengths. Please send drawing for quotation on custom configurations. 1kg ≅ 2.205lbs



PACIFIC INTERNATIONAL BEARING SALES, INC.

800.228.8895 • WWW.PACIFICBEARINGSALES.COM