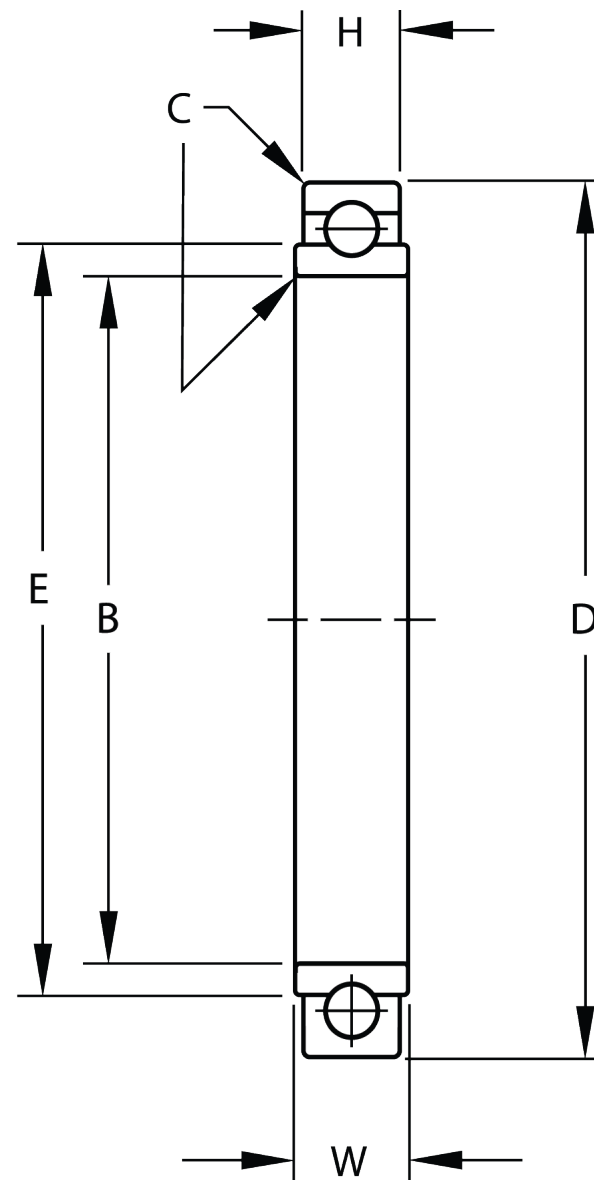




Width (B)	.2810 in
Brand	RBC
Bore Diameter (d)	1.8125 in
O.D. (D)	2.2500 in
Finish	Cadmium
Material	52100 Bearing Quality Steel



COMPONENT	Torque Tube
-----------	-------------



Pacific International Bearing, Inc.  
33258 Central Ave, Union City, CA 94587  
1-800-228-8895, 510-512-7000,  
info@pibsales.com  
www.pibsales.com

This file and any associated information and specifications are provided for reference and evaluation purposes only, and is subject to change without notice. PIB makes no representations, warranties or guarantees as to the appropriateness, accuracy, completeness, or suitability for any purpose, of the file, information or specifications. You are solely responsible for the use of the file, information or specifications.

**B544DDFS428**  
**RBC**  
1.8125in X 2.2500in X .2810in, Torque Tube,  
Extra Light Duty Single Row Ball Bearing,  
Sealed, Cadmium Plated

UNIT
INCH
SHEET