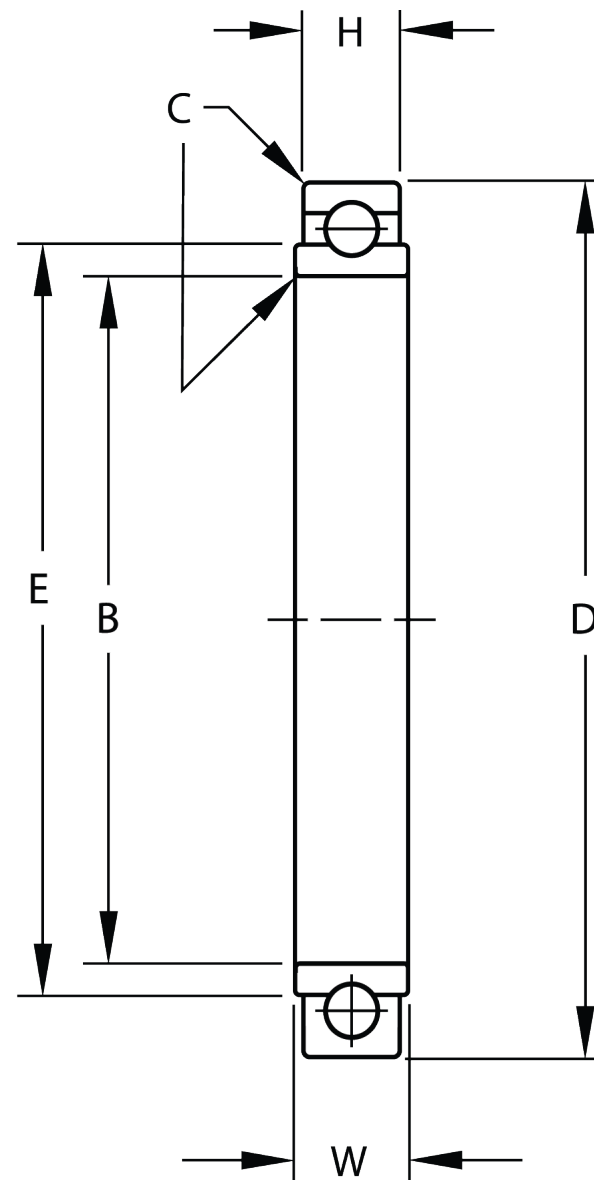





Width (B)	.2810 in
Bore Diameter (d)	2.3125 in
O.D. (D)	2.8750 in
Brand	RBC
Finish	Cadmium
Material	52100 Bearing Quality Steel



COMPONENT	Torque Tube
-----------	-------------

	<p>Pacific International Bearing, Inc. 33258 Central Ave, Union City, CA 94587 1-800-228-8895, 510-512-7000, info@pibsales.com www.pibsales.com</p>	<p>This file and any associated information and specifications are provided for reference and evaluation purposes only, and is subject to change without notice. PIB makes no representations, warranties or guarantees as to the appropriateness, accuracy, completeness, or suitability for any purpose, of the file, information or specifications. You are solely responsible for the use of the file, information or specifications.</p>	<p>B546DDFS464 RBC 2.3125in X 2.8750in X .2810in, Torque Tube, Extra Light Duty Single Row Ball Bearing, Sealed, Cadmium Plated</p>		UNIT
					INCH
					SHEET