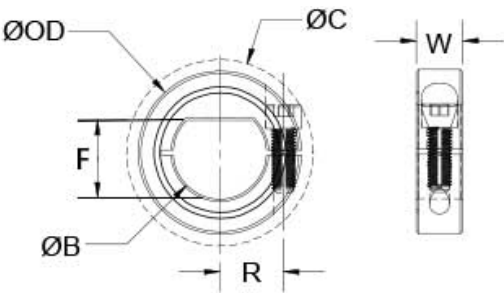




O.D. (D)	5/8 in
Tariff Code	8483.60.8000
Bore (B1)	0.2500 in
Bore Tolerance	+0.0020 in / +0.0005 in
Screw Material	Alloy Steel
Screw Finish	Black Oxide
Forged Clamp Screw	#4-40
ISO 9001:2015	Certified
REACH	Compliant
RoHS3	Compliant
Conflict Minerals	Compliant
Material	Aluminum
Screw Location (R)	0.210 in
Number of Screws	1 ea
Seating Torque	15 lb-in
Hex Wrench Size	3/32 in
Temperature	-40°F to 225°F (-40°C to 107°C)
Country of Origin	USA
Finish Specification	Bright No Plating
Shaft Tolerance	+0.0000 in / -0.0005 in
UNSPC	31162811
Clearance Diameter (C) MAX	0.773 in
Material Specification	2024-T351 Bar
Brand	Ruland



COMPONENT	Shaft Collar - D-Bore
-----------	-----------------------



Pacific International Bearing, Inc.
33258 Central Ave, Union City, CA 94587
1-800-228-8895, 510-512-7000,
info@pibsales.com
www.pibsales.com

This file and any associated information and specifications are provided for reference and evaluation purposes only, and is subject to change without notice. PIB makes no representations, warranties or guarantees as to the appropriateness, accuracy, completeness, or suitability for any purpose, of the file, information or specifications. You are solely responsible for the use of the file, information or specifications.

CLD-4-A
Ruland
.2500in Bore; .6250in Od, 0.281in Width, D-bore Shaft Collar, Aluminum, One-piece, Clamp Style

UNIT

Inch

SHEET