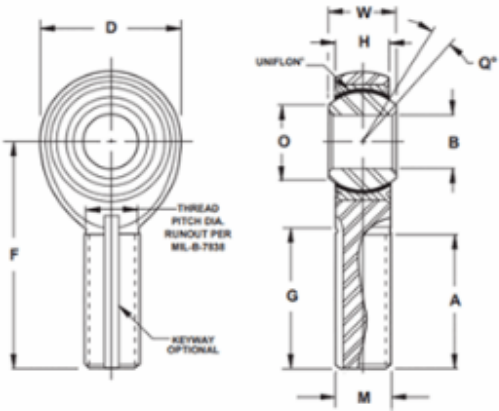




Width (B)	.8750 in
Outer Eye Diameter	.6400 in
Total Length (l2)	3.7625 in
Bore Diameter (d)	.7500 in
Insert Material	17-4 PH Heat TreatedPTFE
Lubricating Type	Self-Lubricatable
Thread Direction	Right Hand
Thread Type	Male
O.D. (D)	1.7750 in
Brand	RBC



COMPONENT

Male Spherical Plain Rod End



Pacific International Bearing, Inc.
33258 Central Ave, Union City, CA 94587
1-800-228-8895, 510-512-7000,
info@pibsales.com
www.pibsales.com

This file and any associated information and specifications are provided for reference and evaluation purposes only, and is subject to change without notice. PIB makes no representations, warranties or guarantees as to the appropriateness, accuracy, completeness, or suitability for any purpose, of the file, information or specifications. You are solely responsible for the use of the file, information or specifications.

MT12
RBC
.7500in X 1.7750in X .8750in, Male
Spherical Plain Rod End,, Military Series,
Self-lubricating, Right-handed Thread

UNIT

Inch

SHEET