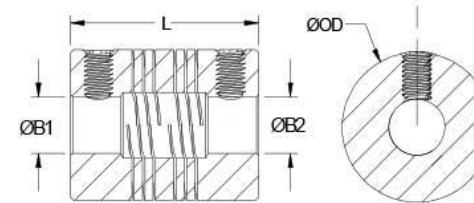




Brand	Ruland
O.D. (D)	0.375 in (9.5 mm)
Material	303 Stainless Steel
Bore (B1)	0.0938 in
Bore (B2)	0.0938 in
Keyway	No
B1 Max Shaft Penetration	0.265 in
B2 Max Shaft Penetration	0.265 in
Bore Tolerance	+0.001 in / -0.000 in
Screw Material	Alloy Steel
Screw Finish	Black Oxide
ISO 9001:2015	Certified
REACH	Compliant
RoHS3	Compliant
Conflict Minerals	Compliant
Tariff Code	8483.60.8000
Number of Screws	2 ea
Seating Torque	0.21 Nm
Hex Wrench Size	0.9 mm
Maximum Speed	6000 RPM
Temperature	-40°F to 350°F (-40°C to 176°C)
Country of Origin	USA
Product Group	P-Series 4 Beam Couplings Set Screw
Shaft Tolerance	+0.0000 in / -0.0005 in
Forged Set Screw	M2
UNSPC	31163003
Static Torque	7.5 lb-in
Dynamic Torque Non-Reversing	3.75 lb-in
Dynamic Torque Reversing	1.875 lb-in
Torsional Stiffness	0.751 Deg/lb-in
Angular Misalignment	3.0 deg
Parallel Misalignment	0.008 in
Axial Motion	0.005 in



COMPONENT

P-Series Four Beam Coupling



Pacific International Bearing, Inc.
33258 Central Ave, Union City, CA 94587
1-800-228-8895, 510-512-7000,
info@pibsales.com
www.pibsales.com

This file and any associated information and specifications are provided for reference and evaluation purposes only, and is subject to change without notice. PIB makes no representations, warranties or guarantees as to the appropriateness, accuracy, completeness, or suitability for any purpose, of the file, information or specifications. You are solely responsible for the use of the file, information or specifications.

PSR6-1.5-1.5-SS

Ruland

3/32" X 3/32" Bores, 0.375" Od, 0.563" Length, Four Beam
Coupling, Stainless Steel Set Screw Style

UNIT

Inch

SHEET