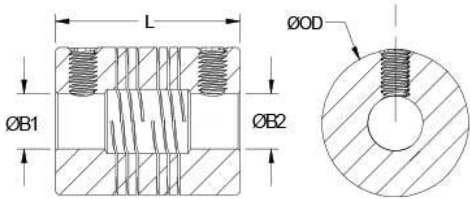






Brand	Ruland
Bore Tolerance	+0.001 in / -0.000 in
Tariff Code	8483.60.8000
Conflict Minerals	Compliant
RoHS3	Compliant
REACH	Compliant
ISO 9001:2015	Certified
Screw Finish	Black Oxide
Number of Screws	2 ea
Screw Material	Alloy Steel
B2 Max Shaft Penetration	0.356 in
B1 Max Shaft Penetration	0.356 in
Keyway	No
Bore (B2)	0.0938 in
Bore (B1)	0.0938 in
Material	303 Stainless Steel
O.D. (D)	0.500 in (12.7 mm)
Hex Wrench Size	0.9 mm
UNSPC	31163003
Parallel Misalignment	0.008 in
Angular Misalignment	3.0 deg
Torsional Stiffness	0.368 Deg/lb-in
Dynamic Torque Reversing	2.75 lb-in
Dynamic Torque Non-Reversing	5.5 lb-in
Static Torque	11 lb-in
Forged Set Screw	M2
Seating Torque	0.21 Nm
Zero-Backlash?	Yes
Shaft Tolerance	+0.0000 in / -0.0005 in
Product Group	P-Series 4 Beam Couplings Set Screw
Country of Origin	USA
Temperature	-40°F to 350°F (-40°C to 176°C)
Maximum Speed	6000 RPM
Axial Motion	0.005 in



COMPONENT

P-Series Four Beam Coupling



Pacific International Bearing, Inc.  
33258 Central Ave, Union City, CA 94587  
1-800-228-8895, 510-512-7000,  
info@pibsales.com  
www.pibsales.com

This file and any associated information and specifications are provided for reference and evaluation purposes only, and is subject to change without notice. PIB makes no representations, warranties or guarantees as to the appropriateness, accuracy, completeness, or suitability for any purpose, of the file, information or specifications. You are solely responsible for the use of the file, information or specifications.

**PSR8-1.5-1.5-SS**  
**Ruland**  
3/32" X 3/32" Bores, 0.500" Od, 0.750" Length, Four Beam  
Coupling, Stainless Steel Set Screw Style

UNIT

Inch

SHEET