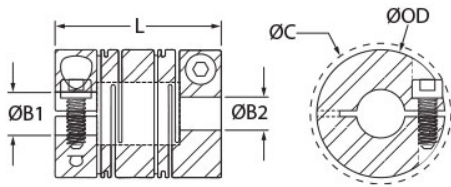






Brand	Ruland
Seating Torque	0.21 Nm
Material	Aluminum
Bore (B1)	0.1875 in
Bore (B2)	0.1875 in
B1 Max Shaft Penetration	0.276 in
B2 Max Shaft Penetration	0.276 in
Screw Material	18-8 300 Series Stainless Steel
Screw Finish	Bright
Bore Tolerance	+0.001 in / -0.000 in
ISO 9001:2015	Certified
REACH	Compliant
RoHS3	Compliant
Conflict Minerals	Compliant
Tariff Code	8483.60.8000
Number of Screws	2
O.D. (D)	0.512 in
Length (L)	0.787 in
Dynamic Torque Non-Reversing	4.9 lb-in
Dynamic Torque Reversing	3.1 lb-in
Finish Specification	SurTec 650
Zero-Backlash?	Yes
Balanced Design	Yes
UNSPC	31163003
Clearance Diameter (C) MAX	0.571 in
Cap Screw	M1.6
Maximum Speed	12000 RPM
Hex Wrench Size	1.5 mm
Torsional Stiffness	8.0 lb-in/Deg
Angular Misalignment	2.5 deg
Parallel Misalignment	0.006 in
Axial Motion	0.012 in
Peak Torque	7 in-lb
Moment of Inertia	0.0004479 lb-in²
Country of Origin	Ireland
Material Specification	7075-T651 Bar



COMPONENT

Slit Coupling



Pacific International Bearing, Inc.  
33258 Central Ave, Union City, CA 94587 1-800-228-8895,  
510-512-7000,  
info@pibsales.com  
www.pibsales.com

This file and any associated information and specifications are provided for reference and evaluation purposes only, and is subject to change without notice. PIB makes no representations, warranties or guarantees as to the appropriateness, accuracy, completeness, or suitability for any purpose, of the file, information or specifications. You are solely responsible for the use of the file, information or specifications.

**RLC8-3-3-A**  
**Ruland**  
0.188" X 0.188" Long Slit Coupling, 0.512" Od, 0.787" Length,  
Aluminum, Clamp Style

UNIT

Inch

SHEET