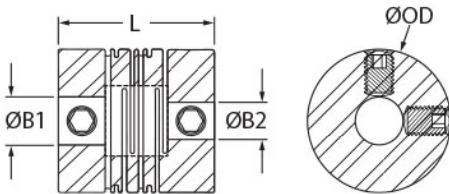






|                              |   |
|------------------------------|---|
| Brand                        | Ruland  |
| Screw Material               | 18-8 300 Series Stainless Steel               |
| O.D. (D)                     | 0.512 in (13.0 mm)                            |
| Material                     | Aluminum                                      |
| Bore (B1)                    | 0.1250 in                                     |
| Bore (B2)                    | 3 mm  |
| B1 Max Shaft Penetration     | 0.276 in (7.0 mm)                             |
| B2 Max Shaft Penetration     | 0.276 in (7.0 mm)                             |
| Number of Screws             | 4   |
| Length (L)                   | 0.787 in (20.0 mm)                            |
| Screw Finish                 | Bright  |
| ISO 9001:2015                | Certified                                     |
| REACH                        | Compliant                                     |
| RoHS3                        | Compliant                                     |
| Conflict Minerals            | Compliant                                     |
| Tariff Code                  | 8483.60.8000                                  |
| Bore Tolerance               | +0.001 in / -0.000 in (+0.020 mm / -0.000 mm) |
| Seating Torque               | 0.44 Nm                                       |
| Dynamic Torque Non-Reversing | 6.2 lb-in (0.70 Nm)                           |
| Dynamic Torque Reversing     | 4.4 lb-in (0.50 Nm)                           |
| Country of Origin            | Ireland                                       |
| Finish Specification         | SurTec 650                                    |
| Zero-Backlash?               | Yes   |
| Forged Set Screw             | M2.5  |
| Balanced Design              | Yes   |
| UNSPC                        | 31163003                                      |
| Hex Wrench Size              | 1.3 mm  |
| Maximum Speed                | 20000 RPM                                     |
| Torsional Stiffness          | 8.0 lb-in/Deg (0.9 Nm/Deg)                    |
| Angular Misalignment         | 2.5 deg                                       |
| Parallel Misalignment        | 0.006 in (0.15 mm)                            |
| Axial Motion                 | 0.012 in (0.30 mm)                            |
| Peak Torque                  | 10.6 in-lb (1.20 Nm)                          |
| Moment of Inertia            | 0.0004607 lb-in²                              |
| Material Specification       | 7075-T651 Bar                                 |



COMPONENT

Slit Coupling



Pacific International Bearing, Inc.  
33258 Central Ave, Union City, CA 94587  
1-800-228-8895, 510-512-7000,  
info@pibsales.com  
www.pibsales.com

This file and any associated information and specifications are provided for reference and evaluation purposes only, and is subject to change without notice. PIB makes no representations, warranties or guarantees as to the appropriateness, accuracy, completeness, or suitability for any purpose, of the file, information or specifications. You are solely responsible for the use of the file, information or specifications.

**RLS8-1/8"-3MM-A**  
**Ruland**  
0.125" X 3mm Long Slit Coupling, 0.512" (13.0mm) Od, 0.778"  
(20.0mm) Length, Aluminum, Set Screw Style

|             |
|-------------|
| UNIT        |
| Inch/Metric |
| SHEET       |